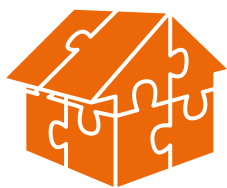


# Product Catalogue 18/19



**JIGSAW**  
SOLUTIONS

*Jigsaw provide the solution piece by piece*



**100%**  
ENERGY EFFICIENT



TRADITIONAL



INFRARED

**100%**  
CONTROLLABLE



**100%**  
SAFE



*Feel the Future of Heating. Feel the Warmth of Infrared.*





Above: XLongwave R1100 in Black Glass

Cover: Private Print R1600w in Situ

## WHO ARE JIGSAW?

Jigsaw is a family owned business. We are a team of professionals who care about providing an excellent product with a first class finish.

Our goal is to help you modernise your heating system, save you money on your energy bills and add premium products to your home. As part of this we offer the full service from the first fix to plastering, decorating and installation. We tailor each quotation for bespoke installations and decoration to leave your home fully refurbished.

At Jigsaw Solutions, we believe that the future of heating your home efficiently will be infrared. Our products are highly efficient, fully controllable and market leading in their design. We are sure that there will be a Jigsaw product to suit your environment.

The demand of your heating could also be met by combining solar power or other renewable energy sources.

One of our main goals is to reduce the amount of pollution and wasted energy produced by our homes. We are working towards zero CO2, zero waste, high efficiency heating. As part of our commitment to this we use products that are the most efficient on the market, have long working lives and ones that can also be recycled.

*Jigsaw provide the solution piece  
by piece*



# WHAT IS INFRARED?

*Infrared is radiant heat, therefore it feels like stepping out of the shade and into the sun.*

## What is infrared heating?

Infrared is a modern, innovative way to heat your property. It looks great, takes up very little space, can be wall or ceiling mounted and comes in a wide range of shapes and sizes to suit your room.

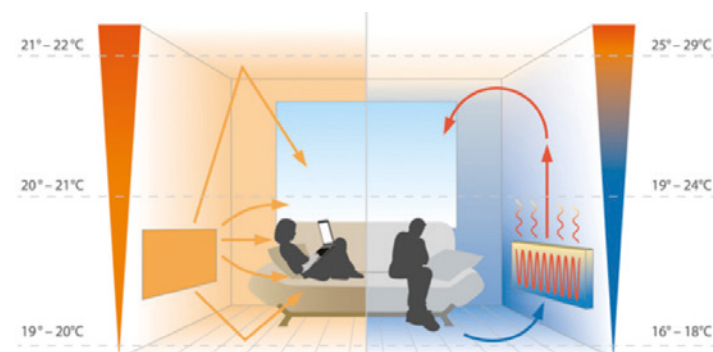
Rather than heating the air - like traditional gas, oil and electric systems - infrared heats the very fabric of your building. The process is 100% energy efficient, delivering significant energy and cost saving benefits.

- Up to 25% reduction on gas central heating systems
- Up to 50% reduction on oil central heating systems
- Up to 60% reduction on electrical storage heating.

## 100% Controllable

Like conventional heating systems, far infrared heating products can be controlled through a range of programmable thermostats, receivers and sensors. Jigsaw offer a large range of thermostats to control the heaters. Some can be controlled by touchscreen and or phones, tablets and computers.

## Energy Savings



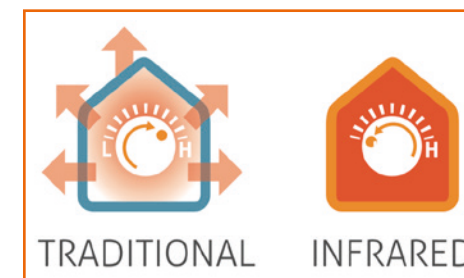
Infrared heats the space and all the objects within it which is 30% more efficient than standard plumbing and up to 60% more than storage heaters.

Convection heaters (Radiators) heat the air, which is inefficient and causes pockets of cold air and drafts. Meaning that all the warm air can be lost.



# BENEFITS OF INFRARED

*1/3 more energy is required to heat a room using convection heating.*



Infrared heats the objects directly when it touches them. That object will then either absorb heat or reflect it to another object within the space. Whereas, convection heat is lost through the materials of the building.

Infrared heat works in exactly the same way as our sun does, whilst this sounds very Science Fiction it is perfectly safe and in fact it is often used to keep premature babies warm in hospital.

## Benefits of Infrared

As well as being an efficient way to heat your home, our heaters also have added health benefits.

They help ease allergens, mould and condensation in the space. Infrared does not circulate air. Therefore, it does not circulate dust and pollen.

This helps sufferers of Hay Fever and Asthma and other respiratory issues.



## What does it feel like?

Far Infrared is radiant heat, therefore it feels like stepping out of the shade and into the sun. Whilst warming you, IR also boosts your immune system and improves blood flow and circulation. It is also one of the safest, most efficient ways to rid your body of numerous toxins.

Infrared is a healthy vital heat - effectively recreating the sun's comforting warmth. Our bodies naturally absorb and emit the same type of heat. Infrared heat warms the human body more comfortably than heated air currents.

# WHAT SIZE HEATER DO I NEED?

## Room Heating Measurement

Infrared heaters heat the fabric of the building, materials and people around, not air. This means that the buildings and spaces can retain heat much longer. Initially, this can mean that the heaters will be required to be on for 2-3 days at the start of the colder seasons. The building needs to get to a steady temperature in each room. Once this has been reached, the temperature will just need "topping up." At Jigsaw, we use a simple equation to help work out the heating requirements of each room:

$$\text{Wattage} = \text{Length} \times \text{Width} \times \text{Height} \times 30$$



Length x Width. Height



Then choose the heater to fit the space

## Example Calculation

If we look at a space for a living room measuring 4m by 5m with an height of 2.5m the calculation looks like this (30 is the average watts per meter required to heat the space):

$$\text{Wattage} = 4 \times 5 \times 2.5 \times 30$$

$$\text{Room Requires} = 1500 \text{ Watts}$$

## Measurements of the Building

It is important to know the construction of the building and its insulation to best gauge the wattage required. An extra 15% should be added for old or poorly insulated apartments or houses. 10% should be added to detached houses, 25% to individual poorly insulated houses.

With our extensive range of stylish heaters there is plenty to choose from. Our calculations will provide some inspiration, but please talk to us today as any combination of heaters can be used to provide the right level of comfort and efficiency.

# THE ENVIRONMENT

## The Future is Green!



At Jigsaw we are planning for the future and we believe that it will be a green one. Due to this, we have high requirements for our infrared heaters.

We have ensured that our heaters are optimised to work with photovoltaic (Solar panels) and other renewable energy systems.

Your heating bill could be reduced with the addition of solar power!

## Where does the cost and energy saving come from?

**1/3** more energy required to heat a room using convection heat.

**Infrared heaters** can provide the same comfort levels at lower temperatures than **convection heat**.

**Convection heaters** take 6% more energy to raise the **temperature by each 1C**.



**Convection heat** is subject to higher heat loss from piping and draughts than **Infrared heating** is.



**Convection heat** is a far less efficient source of heat transfer than **Infrared heating** is.

## Do Infrared Heating Panels Save Money?

In most cases infrared heating can save you money. However, it is important to be realistic and to understand that they will not save money in every situation.

First of all we need to consider how infrared heat works – infrared heating has been scientifically proven to be around 30% more efficient than convection based heating and up to 60% more efficient than underfloor heating. Less energy equals less CO2.

When comparing convection and infrared heaters, IR delivers heat at the point of energy consumption, there are no distributed heat losses and there is not the same loss of efficiency. In addition no annual maintenance or servicing is required to keep the system operating at maximum efficiency.

Due to the design and application of innovative technologies our heaters feature both high technical and aesthetic resistance properties, thus ensuring a long product life, which is also 100% recyclable.



# JIGSAW Venetian Glass

*“An elegant focal piece to any environment. Plus, 50% saving on my electricity bills.*

*Pete, West Midlands*

Our premium range of Venetian Glass heaters come in a large variety of shapes, wattages and colours.

High quality materials have been used to design and make our top of the range Infrared Heaters. Extremely well crafted, these panels are beautiful and will add an elegant focal piece to any environment.

Our touchscreen infrared heaters can be tailored to suit your style and decoration. Whether you would prefer something subtle or if you would like something bespoke that stands out.

We can help tailor your infrared heater to your space. Each of the range is beautifully designed, efficient and easy to clean. They are made from the finest quality Venetian glass.

We are confident in the quality of our panels so each one comes with a 5-year manufacturer's warranty.



Roma in Situ



Roma in Situ



Colour Choices

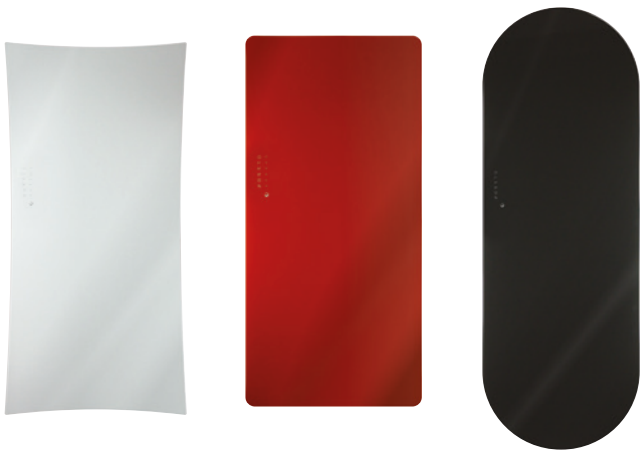
There are three shapes in the Venetian range to choose from. They are Roma, Portofino and Venice. Premium manufacture, attention to detail and Italian design combine in a truly beautiful heater, extending only 5cm from the wall, which will envelope you in a gentle, relaxing and comfortable warmth.



Venice in Situ

Our heaters are not mass produced as some other companies. Our manufactured process ensures premium quality to enhance and add to the interior decoration of your home or space. Each heater comes with its own remote control allowing you to set the temperature from the comfort of your seat.

*Our heaters are beautifully crafted to make them works of art.*



Portofino

Roma

Venice



700 - 1500W



5 Year\*



RATED



Colour Choice



Colour Choice

## SUITABLE FOR INDOOR USE

Recommended installation point: Wall 155cm high  
Dimensions (W x H x D): See Table (Dimensions Fixings Total depth 50mm)

**IDEAL FOR:** Indoor Living space, Bathrooms, Conservatories, Summer Houses, Office Spaces, Reception Areas and many more.

Shape	Wattage	Size in mm
Roma	700	1000 x 500
	1000	1200 x 600
	1500	1520 x 600
Venice	700	1380 x 500
	1000	1660 x 600
	1500	1900 x 600

Shape	Wattage	Size in mm
Portofino	700	1063 x 532
	1000	1300 x 650
	1500	1600 x 670

Our heaters heaters can be customised for colour and images. Please contact us to ask for information or to place an order.



Jigsaw provide the solution piece by piece

Feel the Future of Heating. Feel the Warmth of Infrared.



# JIGSAW Venetian Mirror

*“Wow, that’s a heater and a mirror!”*

Our bathroom mirror range is one of our best sellers. A mirror heater is a fantastic way of combining two separate items and freeing up wall space. One major benefit of this heater is that it is also IP rated for bathroom use. It will also remain mist free, comes in several shapes and sizes and will suit any bathroom or wet room.

At Jigsaw, we believe that there is nothing worse than a cold bathroom! With sensor controlled panels for perfectly distributed warmth, your whole bathroom will be heated and cold Monday mornings will be a thing of the past.

With a slimline finish, the heater will extend only 5cm from the wall enhancing the space and making the bathroom a place you will want to luxuriate in. The IP35 rating means that you can install the heater anywhere in the bathroom provided that it is 30cm away from a direct water source.

Our premium range of Venetian mirror heaters come in a variety of shapes and wattages.



Portofino Mirror in Situ



Venice Mirror in Situ

*Making the bathroom a place you will want to luxuriate in.*

The Roma glass range is manufactured with gently rounded corners and beautiful minimalistic lines and edges. This range of infrared heaters will provide you with an understated elegance and a comfortable heat.

Anyone that has visited Venice will state that it is clearly one of the wonders of the world. Venice is a city of aesthetic beauty. The Venice range of glass infrared radiant panel heaters reflect the city itself. The fluid lines of the heater recalling travel by gondola on the city’s magnificent waterways.

Named after the stunning Italian coastal town, the Portofino heater references the beautiful architecture and coastline of Italy. The design is both elegant and sophisticated.



Portofino Mirror in Situ



Venice Mirror in Situ with Optional Towel Rail



700 - 1500W



5 Year\*



IP RATED



Mirror

## SUITABLE FOR INDOOR USE

Recommended installation point: Wall 155cm high  
Dimensions (W x H x D): See Table (Dimensions Fixings Total depth 50mm)

**IDEAL FOR:** Indoor Living space, Bathrooms, Conservatories, Summer Houses, Office Spaces, Reception Areas and many more.

Shape	Wattage	Size in mm
Roma	700	1000 x 500
	1000	1200 x 600
	1500	1520 x 600
Venice	700	1380 x 500
	1000	1660 x 600
	1500	1900 x 600

Shape	Wattage	Size in mm
Portofino	700	1063 x 532
	1000	1300 x 650
	1500	1600 x 670

Our heaters heaters can be customised for colour and images. Please contact us to ask for information or to place an order.



Jigsaw provide the solution piece by piece

Feel the Future of Heating. Feel the Warmth of Infrared.





# JIGSAW Venetian Wood

*The panelling is authentic Gondola wood from Venice*

Anyone who has visited Venice will state that it is clearly one of the wonders of the world. Venice is a city of aesthetic beauty.

The Venice range of glass infrared heater is a fantastic addition. The wood panelling is actually from a Gondola. The fluid lines of the heater recalling travel by gondola on the city's magnificent waterways. This merge of design and materials has to be seen to be appreciated.

Our Venice range of infrared heater will not only enhance the interior decoration of your space it also will become a conversation piece from your guests. The Venetian Gondola range adds a further wow factor to the design.

They are made from the finest quality Venetian glass. We are confident in the quality of our panels so each one comes with a 5-year manufacturer's warranty.



Venice Wood Vertical



Venice Wood Detail



700 -  
1500W



5 Year\*



IP  
RATED



Colour Choice

Please note that the product varies due to the nature of the source materials

## SUITABLE FOR INDOOR USE

Recommended installation point: Wall 155cm high  
Dimensions (W x H x D): (Dimensions Fixings Total depth 50mm) See Venice Dimensions

**IDEAL FOR:** Indoor Living space, Bathrooms, Conservatories, Summer Houses, Office Spaces, Reception Areas and many more.

# JIGSAW Venetian Stone

*Using slices of real stone, we enhance the elegance our range*

Inspired by the elegant lines of Roman archaeology, our Roma range has been designed with robust elegance in mind, what better then than adding a stunning, textured and tactile stone finish.

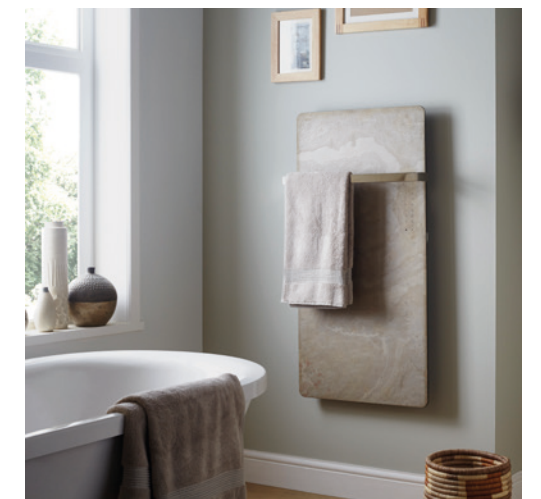
Using slices of real stone, we enhance the elegance of our Roma range of infrared heater with three different choices of stone. Each finish is available in one of two wattages.

Our heaters are not mass produced as some other companies. Our manufactured process ensures premium quality to enhance and add to the interior decoration of your home or space.

The Roma stone range is manufactured with gently rounded corners and beautiful minimalistic lines and edges. This range of infrared heaters will provide you with an understated elegance and a comfortable heat.



New York Stone



Travertine Stone in situ



700 -  
1000W



5 Year\*



IP  
RATED



Colour Choice

Please note that the product varies due to the nature of the source materials

## SUITABLE FOR INDOOR USE

Recommended installation point: Wall 155cm high  
Dimensions (W x H x D): (Dimensions Fixings Total depth 50mm) See Roma Dimensions

**IDEAL FOR:** Indoor Living space, Bathrooms, Conservatories, Summer Houses, Office Spaces, Reception Areas and many more.



Jigsaw provide the solution piece by piece

Feel the Future of Heating. Feel the Warmth of Infrared.



# JIGSAW Venetian Amalfi Mirror

## *The perfect combination for luxuriating in the bathroom*

The exceptional aesthetics and design of our bathroom heating mirrors provide an economical way to heat space whilst integrating a high quality bluetooth speaker and LED lighting. The perfect combination for luxuriating in the bathroom.

In addition to stunning style, a crystal clear mirror and integrated bluetooth speaker, this bathroom mirror infrared heater will also significantly reduce heating costs, condensation and black spot mould in the bathroom and the necessity for constant mirror cleaning.

The difference between our heater mirror and other bathroom mirrors is that our mirror heats not only the mirror so that it is mist free at all times, but also heats the whole bathroom. No other form of heating is required so no wasted space with radiators taking up wall space.

Isolation class 2 and IP45 construction means water-resistant and perfect for wet rooms and bathrooms.



Amalfi Mirror in Situ



Amalfi Mirror in Situ



Amalfi Mirror Detail



400W



5 Year\*



### SUITABLE FOR INDOOR USE

Recommended installation point: Wall 155cm high  
Dimensions (W x H x D): 700mm x 700mm x 50mm

**IDEAL FOR:** Bathrooms, Dressing Rooms, Vanity Rooms, En Suites etc.



Colour Choice

# JIGSAW Eco Mirror Heater

## *High quality combined with high efficiency to produce a mist free mirror*

Our range of Eco Frameless Mirror infrared heating panels are suitable for home, office spaces, care homes, stores and meeting rooms. High quality Commercial Infrared Heaters are the ideal heating solution for a variety of projects.

Our Eco Frameless Mirror infrared panel heater range combines high efficiency with our connection system and patented reflector technology. This means that 100% of produced infrared rays go to the front of the panel. This ensures that only a very small percentage of convection heat, just 7%, is produced. This means that you are getting the maximum infrared heating benefits.

Austrian manufactured, CE-compliant and both TUV GS and RoHS certified. These heaters are IP44 rated making them suitable for zone 2 in bathrooms and wet-rooms.

2 year manufacturer's warranty included.



400w Eco Frameless Mirror



600w Eco Frameless Mirror



400 - 600W



2 Year\*



### SUITABLE FOR INDOOR USE

Recommended installation point: Wall 155cm high  
Dimensions (W x H x D): 600mm x 600mm or 600mm x 900mm

**IDEAL FOR:** Bathrooms, Dressing Rooms, Vanity Rooms, En Suites etc. A thermostat is required for these items. See our accessories page for further information.



Colour Choice



# JIGSAW Aluminium Heater



*The perfect heating for your home, office or business.*

Our all new Aluminium Panel Series Infrared Heaters are a stylish white slim Aluminium heater. They are completely frameless and have a bevelled edge to blend in to any environment. These Infrared Panel Heaters are easy to install on the wall or ceiling with an integrated mounting points.

Our Aluminium panels are as standard produced in plain white or black. However, the panels can be ordered to match colours to suit any décor. These panels can be hidden on the ceiling and walls. They are also sized to slot discretely in to suspended ceilings.

These are high quality commercial Aluminium Infrared Heater. They are tested to ensure their strength and longevity.

Customise the panels by having them sprayed in any RAL colour. Contact Jigsaw for further information. Printed heaters coming soon



White Aluminium Panels



Black Aluminium Panel



White Aluminium Panels in Ceiling



300 - 785W



2 Year



Colour Choice



Colour Choices

## SUITABLE FOR INDOOR USE

Recommended installation point: Wall  
Dimensions (W x H): 595mm x 595mm - 595mm x 1195mm

**IDEAL FOR:** Indoor Living space, Bathrooms, Conservatories, Summer Houses, Office Spaces, Reception Areas and many more.

# JIGSAW ECO IC Heater

*The ECO range of infrared heaters provide a cost effective way of heating any property.*

Our IC ECO panels are as standard produced in white with an Aluminium frame. These panels can be hidden on the ceiling and walls. They are also sized to slot discretely in to suspended ceilings.

An extremely useful way of hiding your heating and freeing up space on walls. Our range of infrared heating are suitable for home, office spaces, care homes, stores and meeting rooms.

These are high quality commercial Aluminium Infrared Heater. They are tested to ensure their strength and longevity. They are the ideal heating solution for a variety of projects. Each panel comes with a 2-year guarantee.



1200w White ECO IC Heater



360w White ECO IC Heater in Situ



450w White ECO IC Heater



330 - 1200W



2 Year



Colour Choice

## SUITABLE FOR INDOOR USE

Recommended installation point: Wall 155cm high  
Dimensions (W x H): 335mm x 1005mm - 1005mm x 1195mm

**IDEAL FOR:** Indoor Living space, Bathrooms, Conservatories, Summer Houses, Office Spaces, Reception Areas and many more.

# JIGSAW Premium WE-Line



Premium quality assured  
with this bestseller from  
Redwell

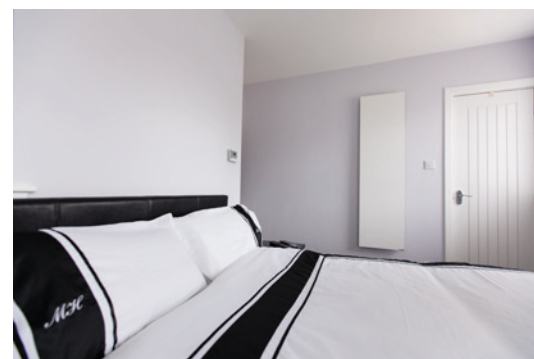


The Redwell range of frameless elegant Glass heating panels are available in flat or structured surface finish and coloured in either black or white to compliment your furnishings. If you are looking for something a little unique and special then these high quality finished panels will wow anyone that sees them.

"Our home has been transformed from a draughty old building into a very comfortable family home. We are particularly pleased with the unobtrusive heating system and we can already see big savings in our energy bills."

Owner, Burnside Steading

With a wide range of panels to chose from their clean and unobtrusive nature make them a perfect fit for any room in your home or office on the wall. Installation is suitable for wall installation only and they can be fixed in either vertical or horizontal arrangement.



WE800 in situ



WE1600 in situ



WE1300 ceiling mounted in situ



630 -  
1100W



10 Year\*



Colour Choice

## SUITABLE FOR INDOOR USE

Recommended installation point: Wall 155cm high  
Dimensions (W x H x D): 706mm x 306mm - 2006mm x 806mm

**IDEAL FOR:** Indoor Living space, Bathrooms, Conservatories, Office Spaces, Reception Areas and many more.

# JIGSAW Premium Round Heaters



Ceiling mounted panels  
that free up all your wall  
space



The Rounds offer a contemporary alternative to the standard formats. The unobtrusive White Rounds are especially popular for ceiling mount, offering a practical heating addition to any room whilst also complimenting the room design.

The Rounds are one of our biggest seller. This heater can be mounted on either the wall or the ceiling. But, we find that their excellent design helps to move any required heating to the ceiling. This is great for freeing up wall space, safety and efficiency.

Combine the heater with our choice of thermostats to allow you to control your heaters wherever you are. The thermostats can be accessed via an app (iOS and Android) or via the on screen displays in the room.

Each room can be individually controlled saving energy and money. Making the perfect temperature for all your spaces.



XLargewave R900 in Mirror



Middlewave R400 in Mirror



350 -  
1100W



10 Year\*



Colour Choice

## SUITABLE FOR INDOOR USE

Recommended installation point: Wall 155cm high  
Dimensions (W x H x D): 710mm Diameter and 610 Diameter

**IDEAL FOR:** Indoor Living space, Bathrooms, Conservatories, Office Spaces, Reception Areas and many more.



Jigsaw provide the solution piece by piece

Feel the Future of Heating, Feel the Warmth of Infrared





# JIGSAW Premium Glass Heaters



*Quality finished panels that will wow anyone that sees them*



The Redwell range of frameless elegant Glass heating panels are available in flat or structured surface finish and coloured in either black or white to compliment your furnishings. If you are looking for something a little unique and special then these high quality finished panels will wow anyone that sees them.

With a wide range of panels to chose from their clean and unobtrusive nature make them a perfect fit for any room in your home or office on the wall.

The surface of the heater is toughened safety glass to ensure usage for busy areas worry free. The heaters can also be used in bathrooms as they are IP 65 rated (when installed). Installation is suitable for wall installation only and they can be fixed in either vertical or horizontal arrangement.

#### Four design variants are available:

Mirror, White Glass, Black Glass and Private Print Glass.



XLongwave R1100 White in situ



XLongwave R1100 in Black Glass



Longwave G600 Picture Heater in situ



630 - 1100W



10 Year\*



Black, White, Mirror or Private Print Glass

#### SUITABLE FOR INDOOR USE

Recommended installation point: Wall 155cm high  
Dimensions (W x H x D): 1020mm x 620mm - 1620mm - 620mm

**IDEAL FOR:** Indoor Living space, Bathrooms, Conservatories, Office Spaces, Reception Areas and many more.

# JIGSAW Premium Mirror Heaters



*Premium quality glass that doesn't mist when you are using the bathroom*



The Redwell range of frameless Mirror panels offer practical and discreet heating. A beautiful introduction to any room these will sit quite indiscernibly on your lounge wall above the fireplace or in the bathroom where you don't need to worry about them misting over.

Redwell panels are built to last. The 10 year guarantee and the quality of the workmanship and product supasses any other product on the market. We at Jigsaw know this as we have tried and tested most of the competition.

The surface of the heater is toughened safety glass to ensure usage for busy areas worry free. The heaters can also be used in bathrooms as they are IP 65 rated (when installed). Installation is suitable for wall installation only and they can be fixed in either vertical or horizontal arrangement.



Middlewave R400 in Mirror



XLargewave R900 in Mirror



350 - 1100W



10 Year\*



Mirror Finish

#### SUITABLE FOR INDOOR USE

Recommended installation point: Wall 155cm high  
Dimensions (W x H x D): 620mm x 520mm - 1620mm x 620mm

**IDEAL FOR:** Indoor Living space, Bathrooms, Conservatories, Office Spaces, Reception Areas and many more.



# JIGSAW Premium Picture Heater



Reclaim your wall space  
with a functional heater  
in your kitchen



Choose from our standard range of prints or pick you own. You can re-create a unique piece of artwork on your heating panel, a special picture or a lovely landscape, the possibilities are endless. We can also offer a bespoke service should you wish to commission something extra special.

With such a large range of sizes available within the WE range to choose from, it is possible to find images from your photo library to decorate all your rooms. The printed series are a fantastic addition for any space. Why have a boring white radiator when you can choose your own image to add meaning or style to your own environment. The images here are just a few of the examples that our clients have chosen.

Installation is suitable for wall installation only and they can be fixed in either vertical or horizontal arrangement. Redwell panels are built to last. The 10 year guarantee and the quality of the workmanship and product supasess any other product on the market.



WE1600 Picture Heater in situ



WE600 Picture Heater in Situ



WE800 Picture Heater in Situ

Endless choices to either  
blend in or stand out  
from the decoration

Infrared panels can be printed with bespoke designs - offering opportunities to brighten the office with artwork or company branding. Alternatively, panels can be used to complement existing decor.

Our printed series of infrared panels are also available our Glass Heater and Towel Heater ranges. Please see the picture requirements below for more information on sizing and quality.



WE800 Picture Heater in situ



Two WE1600 Printed Panels in Situ



250 -  
1600W



10 Year\*



Image Choice

## SUITABLE FOR INDOOR USE

Recommended installation point: Wall 155cm high  
Dimensions (W x H x D): 706mm x 306mm - 2006mm x 806mm

**IDEAL FOR:** Indoor Living space, Kitchens, Conservatories, Office Spaces, Galleries, Schools, Playgroups, Reception Areas and many more.

Model	Wattage	Size in mm
WE250	250	706 x 306
WE350	350	606 x 506
WE420	420	1006 x 386
WE600	600	1006 x 606
WE800	800	1606 x 426
WE900	900	1206 x 706
WE1100	1100	1606 x 606
WE1300	1300	1806 x 706
WE1600	1600	2006 x 806

All depths are 18mm

## Pictures Requirements:

Customers must contact our office to submit their picture. They must also confirm that they own the right to the images.

Size of the image file (JPEG): 8 to 19 MB  
Resolution: min. 120dpi, optimum 300dpi  
Color code: RGB or CMYK



Jigsaw provide the solution piece by piece

Feel the Future of Heating, Feel the Warmth of Infrared

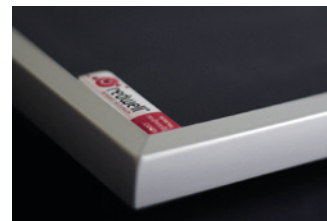




# JIGSAW Premium Blackboard Heater



*Reclaim your wall space with a functional heater in your kitchen*



Blackboard Detail



XLongwave R1100 Blackboard in situ



Longwave R600 Blackboard in situ

The Redwell range of Blackboard heating panels will compliment any room and is especially useful in your office or kitchen, whether you want to keep important notes, keep your diary, write a recipe, your shopping list or just keep a track of the families activities.

With a number of sizes of panels to chose from, Redwell's clean and unobtrusive nature make them a perfect fit for any room in your home or office on the wall.

Installation is suitable for wall installation only and they can be fixed in either vertical or horizontal arrangement.

Redwell panels are built to last. The 10 year guarantee and the quality of the workmanship and product supasess any other product on the market. The blackboard also comes with a scratch proof Aluminium frame.



600 - 1100W



10 Year\*



Colour Choice

## SUITABLE FOR INDOOR USE

Recommended installation point: Wall 155cm high  
Dimensions (W x H x D): 1006mm x 606mm - 1606mm x 606mm

**IDEAL FOR:** Indoor Living space, Kitchens, Conservatories, Office Spaces, Schools, Playgroups, Reception Areas and many more.

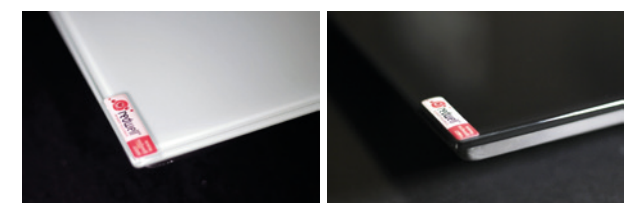
# JIGSAW Premium Towel Dryer 2.0



*Heat your bathroom or use the boost button to dry your towels*



Towel Dryer 2.0 White and in situ



White and Black Structured Glass

The Redwell towel dryer 2.0 is now available with a new function! You can install a room thermostat (Such as the Heatmiser Edge with Air sensor) or with the switch of a button have a two hours operating time, ideal for drying your towels.

Five design variants are available: Mirror, plain white or black glass and also in our white or black structured glass finishes. If you are looking for something a little unique and special then these high quality finished panels will wow anyone that sees them.

The surface of the heater is toughened safety glass to ensure usage for busy areas worry free. The heaters can also be used in bathrooms as they are IP 65 rated (when installed). Installation is suitable for wall installation only.

## Four design variants are available:

Mirror, Flat White Glass, Flat Black Glass, and Private Picture (Select your own image - see Premium Picture Heaters for image guides).



480 - 700W



10 Year\*



Flat Glass, Mirror Finish or Private Picture

## SUITABLE FOR INDOOR USE

Recommended installation point: Wall 155cm high  
Dimensions (W x H x D): 1020mm x 620mm - 1620mm - 620mm

**IDEAL FOR:** Indoor Living space, Bathrooms, Shower Rooms, Changing Areas and many more.

# JIGSAW Premium Enamel Heaters



*Framed heating panels in a range of colours and materials.*



The Enamelled heating panel is available with a white surface and a high quality aluminium frame. The clean and simple lines of this heating panel will compliment any room in your home or office.

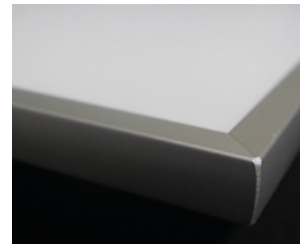
Radiant infrared heat acts directly on surfaces and objects without relying on air currents - infrared panels are able to heat large retail spaces more consistently and efficiently than convection systems.

Installation of the heaters is suitable for both wall and ceiling. The heaters can also be fixed in either vertical or horizontal arrangement. We recommend additional safety brackets are recommended for ceiling installation.

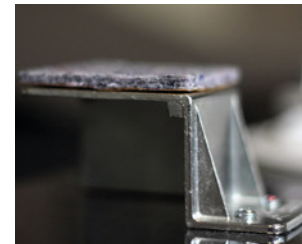
At Jigsaw, we use high quality materials to produce our Infrared Heaters. Therefore, they are the ideal heating solution for a variety of projects. We are very confident in the quality of our work. So much so that each panel comes with a 10-year guarantee.



XLongwave R1100



Edge Quality



Heater Mounting Bracket



330 -  
1200W



10 Year



Colour  
Choice



Standard  
Colour Choice  
of Frames

## SUITABLE FOR INDOOR USE

Recommended installation point: Wall  
Dimensions (W x H): 1006mm x 606mm - 1606 x 606mm

**IDEAL FOR:** Indoor Living space, Bathrooms, Bedroom, Conservatories, Summer Houses, Office Spaces, Reception Areas, and many more.



Jigsaw provide the solution piece by piece

# JIGSAW Premium Panelwave Heater



*The perfect heating for your home, office or business.*



The Panelwave ceiling heaters are manufactured specifically to fit into suspended ceiling systems. They blend seamlessly into the ceiling tile space, matching the false ceiling tiles. Unobtrusive and space saving, and energy efficient. These are a perfect addition to any office or retail space. These Infrared Panel Heaters are easy to install in to any standard suspended ceiling.

The heaters are 430w each. This makes it possible to use them across a wide surface area of an office and zone the heating to improve efficiency.

These Infrared Heaters offer huge energy savings for commercial and domestic installations, up to 60%. The energy transfer ratio on these Infrared Heaters is 98%.

They are the ideal heating solution for a variety of projects. Each panel comes with a 10-year guarantee.



600w Aluminium Panel



430w White Aluminium Panels in Ceiling



Boxed and Ready for Delivery



430w



10 Year



Standard  
Colour Choice

## SUITABLE FOR INDOOR USE

Recommended installation point: Suspended Ceiling Mounted only  
Dimensions (W x H): 595mm x 595mm - 618mm x 618mm

**IDEAL FOR:** Indoor Living space, Bathrooms, Office Spaces, Reception Areas and many more.



Feel the Future of Heating, Feel the Warmth of Infrared





# JIGSAW Outdoor / Indoor / Commercial

## Application of our Outdoor/ Indoor Heaters.

We work hard with our suppliers to ensure we are providing our customers with the best infrared heaters on the market. Each heater offered is designed with unique features to enable our products to work for every situation. Fully IP rated, weatherproof and ultra low glare heaters that are specifically created for the domestic and commercial markets. Our large scale commercial heaters can even heat the space of an indoor tennis court.

The heaters we provide are built to extremely high standards from the best materials. Our bulbs have a life expectancy of approximately 7000 hours. The Gold Reflector on the Monaco heater is chosen due to its properties of being able to withstand temperatures of 350 degrees Celsius and being able to be rolled with such precision to fully reflect any infrared heat from the front of the heater.

Heat any outside spaces. Our range of heaters will provide you with a comfortable, pleasant and warm environment all year round. Not just in the summer months.



# COST EFFICIENCY

## Running Costs of Infrared

When comparing infrared to gas, the savings are over 30%. The main reason for this saving is due to the effective way that infrared heats a person or object. The heat from one of our heaters is also immediate. You therefore save more money as you do not need our heaters on as long.

Also, our heaters are virtually maintenance free. There are no moving parts, no gas bottles to replace or air filters like with most gas heaters.

There is also no need to change bottles of gas when one runs out. Simply switch on the heater with the touch of a button or set it to the desired wattage with your handy remote control.

## Domestic Energy comparisons

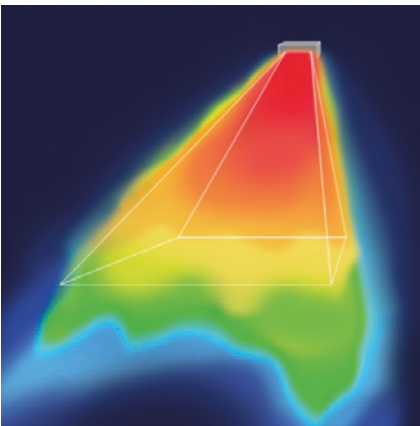
Washing Machine (2kW)	28p per hour
Fridge Freezer (1.4kW)	20p per hour
Tumble Dryer (5kW)	70p per hour
Patio Gas Heater (12kW)	£1.68
Jigsaw Monaco Heater (1.5kW)	21p per hour

Based on the price of electricity being 14p per hour

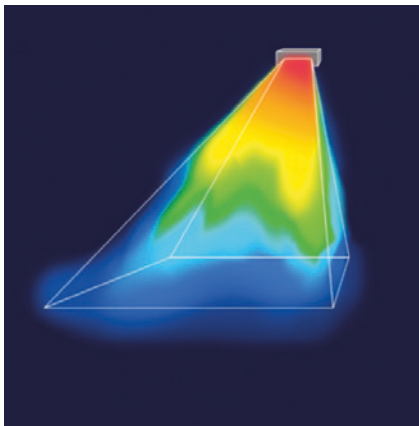
## Heater Comparison

It is clear to see that there is only one clear winner for heat distribution on the market when comparing the range of outdoor heaters currently available. The top diagram shows the coverage of our heaters. 96% of energy consumed is directed as heat. Almost no heat is lost to the air. The Quartz heater loses 40% of its consumed energy and does not project its heat very well. It will therefore not warm the people and objects below efficiently. The Gas heater loses 60% of its effective heat. Most heat is dissipated not very far from the heater in the air.

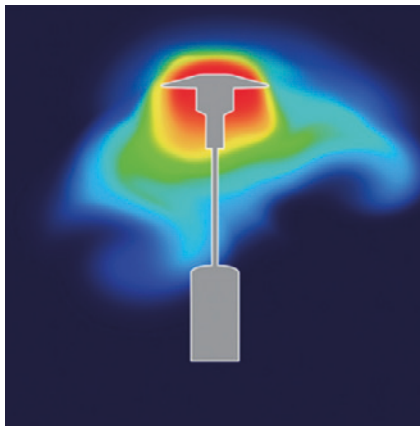
Our outdoor heaters are up to 96% efficient. Almost no heat is lost to the air. We provide premium products for any environment.



Jigsaw Infrared Heater



Standard Quartz Heater



Gas Heater



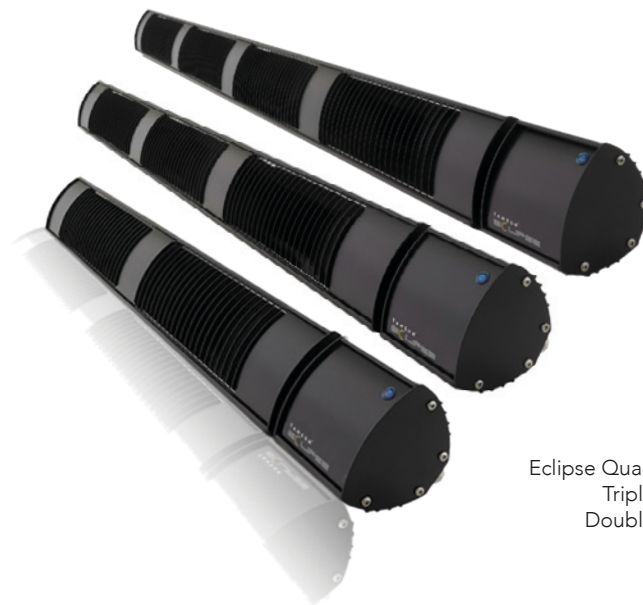
# JIGSAW Premium Eclipse Heater



*The Eclipse is perfect for ambient, comfortable heating.*

Our premium range of indoor and outdoor heaters come in a large variety of shapes, sizes and wattages. The Eclipse is a no glare infrared heater. Constructed from powder coated black profiles, its modern sleek design will allow it to fit easily into upscale environments and it is also perfect for where heat is required but without the glare.

The Eclipse turns 96% of all energy into medium wave infrared heat, which is perfect for ambient, comfortable heating. Advanced technology which is 35% more energy efficiency than others of its kind.



Eclipse Quad  
Triple  
Double



Eclipse Double in Situ



1.5, 2.25,  
3KW



2 Year



Colour Choice

**SUITABLE FOR INDOOR AND OUTDOOR (Enclosed/Semi-Enclosed Environments)**

Recommended installation point: Minimum height: 2.0m  
Dimensions (W x H x D in mm): 940 x 111 x 89 (Double) - 1660 x 111 x 89 (Quad)

**IDEAL FOR:** Patios and Terraces, Offices, Conservatories, Studies, Hotel Environments, Restaurants and Bars, Casinos and Theatres.

# JIGSAW High Power Heater

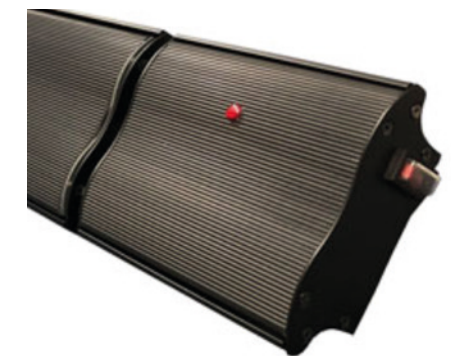
*The perfect heater for a wide variety of applications.*

This High Power Infrared Heater is perfect for heating large rooms, outdoor spaces, conservatories and industrial spaces. As with all of the High Power range, the infrared heaters can be connected to a range of thermostats to enable easy control of the temperature of your space.

This gives the user full control of heating levels in the room, allowing them to adjust according to comfort. Or, chose one of the Heatmiser range to allow full control over the App (iOS & Android).



High Power Heater



High Power Heater Detail



Al Fresco Dining



1.2 -  
3KW



2 Year



Colour Choice

**SUITABLE FOR INDOOR AND OUTDOOR (Enclosed/Semi-Enclosed Environments)**

Recommended installation point: Minimum height: 1.8m  
Dimensions (W x H x D in mm): 900 x 150 (1.2kw) - 1800 x 150 (3kw)

**IDEAL FOR:** Indoor and Outdoor Bars, Restaurants, Games Rooms, Al Fresco Dining, Patios, Terraces, Offices, Conservatories, Hotel Environments, Restaurants and Bars.



# JIGSAW Monaco Heater



*Weatherproof to heat any outside space.*

The Monaco heater is weatherproofed and is ideal for outdoor patio, bar and restaurant areas and terraces. Just about any commercial or domestic open space could benefit from the Monaco heater.

This premium ultra-low glare heater is supplied as standard with central swivel bracket allowing versatile movement. It is supplied as standard with unique glare reducing gold reflector and top of the range low glare lamp.

The Monaco has the advantage of being mounted overhead if required and is compatible with energy saving controllers.



Monaco Triple  
Double  
Single



Monaco in Situ



Monaco in Situ



1.5 - 4.5KW



2 Year



IP RATED



Colour Choice



Colour Choice

**SUITABLE FOR INDOOR AND OUTDOOR USE** - Heating a surface area of 11-36m sq.

Recommended installation point: 2.0 - 3.0m minimum height  
Dimensions (W x H x D in mm): 402 x 227 x 112 - 1178 x 227 x 112

**IDEAL FOR:** Decking and Patio areas, VIP Area, Restaurants, Hotels, Casinos, Awnings, Hot Tubs and many more



Jigsaw provide the solution piece by piece

# JIGSAW Sorrento Heater



*Designed to run for hours in any hard to heat draughty areas.*

The Sorrento is one of the most installed infrared heaters, due to its exceptional build, easy installation and unrivalled aesthetics.

Discover the Sorrento Range of LOW GLARE, high powered heaters, that add elegance to any outdoor or indoor environment. Ideally used where more heat is required in larger areas.

The Sorrento single can be mounted overhead providing flexibility at the time of installation and comes as standard with two wall mounting brackets.



Sorrento Triple  
Double  
Single



Sorrento in Situ



Sorrento in Situ



1 - 6KW



2 Year



IP RATED



Colour Choice



Colour Choice

**SUITABLE FOR INDOOR AND OUTDOOR USE** - Heating a surface area of 11-36m sq.

Recommended installation point: 2.0 - 4.5m minimum height  
Dimensions (W x H x D in mm): 402 x 227 x 112 - 1178 x 227 x 112 (Excluding Brackets)

**IDEAL FOR:** Decking and Patio areas, VIP Area, Restaurants, Hotels, Reception Areas, Retail Outlets, Workshops, Garages, Awnings, Hot Tubs and many more



Feel the Future of Heating. Feel the Warmth of Infrared.



# JIGSAW Premium Diskus Heater



*Radiates warmth in 360 degrees whilst looking stunning*



Diskus in situ



Diskus Black in situ



Diskus Black in situ

The Diskus is a beautifully elegant design that floats in space. Available in black finish it is the perfect heating solution for areas with large ceiling heights. It's curved surface radiates warmth in 360 degrees and looks at home in a variety of places.

The Diskus is an elegant but powerful ceiling heater, which impresses because of its outstanding ability to quickly generate efficient heat in halls or rooms with high ceilings.

It is available in a black finish and would look at home in a range of locations. Heat spaces that you previously thought were impossible to keep warm.

This unit is to be suspended from the ceiling only and must be installed beyond the reach of people due to the high surface temperature. It must be mounted at least 2.7m above floor level.



1050W



10 Year\*



Colour Choice

## SUITABLE FOR INDOOR USE

Recommended installation point: Minimum 2.7m above floor level  
Dimensions: 800mm Diameter

**IDEAL FOR:** Indoor Living space, Kitchens, Large Open Spaces, Office Spaces, Schools, Restaurants, Sheltered Eating Areas, Reception Areas and many more.



Jigsaw provide the solution piece by piece

# JIGSAW Premium 2 In 1 Heater



*The 2in1 Infrasmile is perfect for any office or commercial space. Light and heat together!*



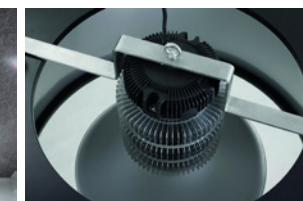
The 2in1 Infrasmile device combines energy saving infrared heating technology with LED lighting.

A suspended ceiling installation - hanging like a conventional lamp it is designed to work in a range of environments.

We want to see it in offices and other commercial buildings where it could heat meeting rooms, reception areas or other communal spaces like lunch rooms and waiting rooms.

Similarly, it could be fitted in restaurants or hotels, complimenting the interior space whilst providing a practical heating and lighting solution. Also available without LED light fitting.

Combine the infrasmile with one of our thermostats to zone the temperature for each area or work station.



Infrasmile 2in1 Detail



Infrasmile 2in1 in situ



Infrasmile 2in1 Fixings



1250 - 3400W



10 Year\*



Colour Choice

## SUITABLE FOR INDOOR USE

Recommended installation point: Minimum 2.7m above floor level  
Dimensions (W x H x D): 370x1270mm (Dia) up to 620x1270mm (Dia)

**IDEAL FOR:** Indoor Living space, Large Open Spaces, Offices, Meeting Rooms, Schools, Restaurants, Reception Areas and many more.

Feel the Future of Heating. Feel the Warmth of Infrared.





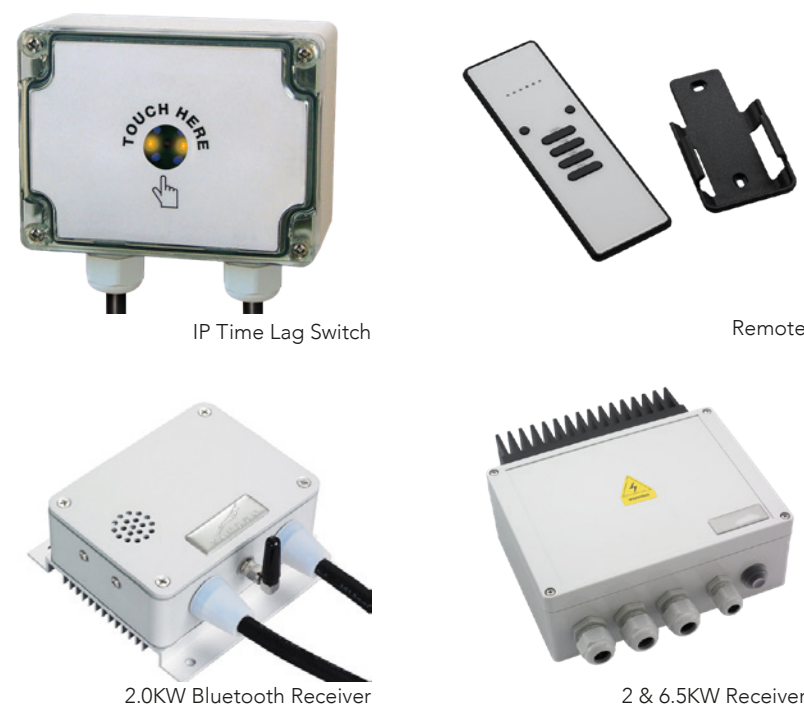
## Glass and Aluminium

Our choice of thermostats allow you to control your Aluminium heaters wherever you are. The thermostats can be accessed via an app (iOS and Android) or via the on screen displays in the room.

Each room can be individually controlled saving energy and money. Making the perfect temperature for all your spaces.



## Indoor and Outdoor



We offer a selection of heating control devices for your indoor and outdoor range.

Our remotes and receivers allow you to control when you need heating and what power you require. Why heat a space when there is no one using it?

The remote can be used to zone areas and set the power output between OFF - 50% - 75% - 100%. The Bluetooth/App remote control between 0-100%.

The perfect heat settings for any large indoor or outdoor space.

## Why Choose Jigsaw?

At Jigsaw we are positive that you will be extremely happy with our products and installations. Our team of installers are professionally trained and have the correct qualifications to install your new equipment. We also guarantee that we will leave your home spotless. At Jigsaw we benefit from the following:

- Experienced staff members with a wealth of knowledge of infrared
- Variety of the best products on the market to choose from
- In house electricians
- Bespoke installations and products
- Up to 10 year warranty\* on our products
- Extremely energy efficient heating systems

## 4 Easy Steps to Installation

1. **Arrange a Quote** - Call 0333 0050 227 or email [info@solutionsbyjigsaw.co.uk](mailto:info@solutionsbyjigsaw.co.uk) to discuss our products and book a no obligation quotation.
2. **Home Survey** - One of our survey team will measure your space to advise you on the products which are the best for your needs.
3. **Receive your quote** - Our surveyor will create a quotation that is bespoke to your home or business. Giving you designs to suits your needs and costs and the most energy efficient solution. Pricing which is easy to understand with no hidden costs.
4. **Installation** - Our professional team of Engineers, Electricians and Decorators will install your new heating system and modernise your home.

Or, we can supply the equipment and provide support with the installation.



WE Series in Situ



Portofino Heater in Situ

\*10 Year warranty included on all Redwell panels.

\*\*5 Year warranty on all Venetian panels.

\*\*\*2 Year warranty on Eclipse, High Power, Monaco and Sorrento heaters





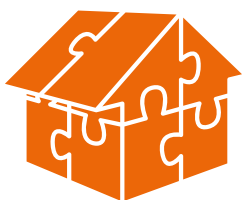
Redwell Towel Dryer 2.0 - Model Shown 700w

For Further Information Contact:

Email: [info@solutionsbyjigsaw.co.uk](mailto:info@solutionsbyjigsaw.co.uk)

Web: [www.solutionsbyjigsaw.co.uk](http://www.solutionsbyjigsaw.co.uk)

Phone: 0333 0050 227



**JIGSAW**  
SOLUTIONS

Solutions by Jigsaw LTD is a Limited Company registered in England and Wales.  
Registered office: 98 Sheffield Road | Sutton Coldfield | West Midlands | B73 5HW Company Number 10669703